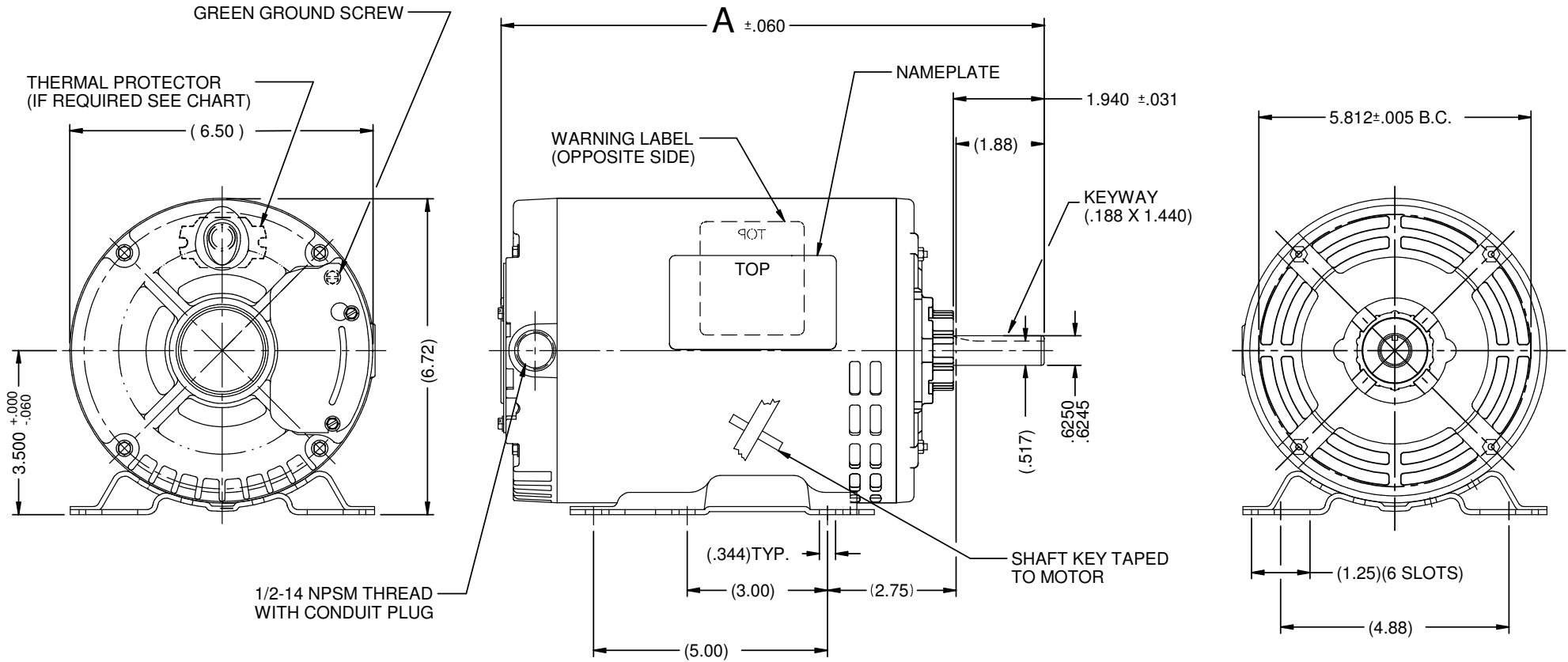




Catalog #: D12P2GH

| | |
|------------------------------|--------------------|
| Model_Number: | P063FPD1726015B |
| PRODUCT NAME: | .5 HP - ODP - 1725 |
| PHASETYPE: | 3_POLYPHASE |
| MOTOR ENCLOSURE: | ODP |
| HORSEPOWER: | .5 |
| KILOWATTS: | 0.4 |
| POLES: | 4 |
| NUMBER SPEEDS: | 1 |
| RPM: | 1725 |
| HERTZ: | 60 |
| VOLTS PRIMARY: | 575 V |
| VOLTS : | 575 |
| FRME : | 56 |
| SHAFT CODE: | H |
| STATOR DIAMETER: | 6.3 |
| STACK: | 1.375 |
| MOUNTING: | RIGID |
| MOTOR TYPE: | FHP |
| OPPOSITE END BEARING: | 6203 |
| SHAFT END BEARING: | 6203 |
| AMBIENT: | 40 |
| ROTATION: | REVERSIBLE |
| SERVICE FACTOR: | 1.25 |
| SHIPPING WEIGHT: | 24 |
| THERMAL PROTECTION: | NONE |
| BREAKDOWN TORQUE: | 109.6 |
| BREAKDOWN TORQUE UOM: | OZFT |
| LOCKED ROTOR TORQUE: | 81.81 |
| LOCKED ROTOR TORQUE UOM: | OZFT |
| INSULATION CLASS: | B |
| KVA CODE LETTER: | M |
| LOCKED ROTOR AMPS: | 4.55 |
| NEMA NOMINAL EFFICIENCY: | 78.2 |
| FULL LOAD AMPS PRIMARY: | .68 |
| SERVICE FACTOR AMPS PRIMARY: | .76 |

| VAR | MODEL | CUSTOMER | CAT. NO. | A | B | C | D | HP | VOLTS | SF | AMPS | HZ | RPM | CONN VOLTS | PROT. | DESCRIPTION / REMARKS |
|-----|-------------|----------|----------|-------|-------|-------|-------|-----|-------|------|------|----|------|------------|-------|-----------------------|
| 001 | P63FPD-1726 | USEM | D12P2GH | 11.39 | ----- | ----- | ----- | 1/2 | 575 | 1.25 | 0.68 | 60 | 1725 | -- | NONE | N56H, ODP |



NIDEC MOTOR CORPORATION 04-Mar-19

REFER TO S.E.I.M. 24-1

| | | |
|---------------------|----------------------|----------|
| NEW DRAWING CREATED | REVISION RECORD FOR: | JC 72900 |
| ISSUED BY: | ENGINEER APPROVED: | |
| E.PIMENTEL | T.MILLER | |

| | |
|---|----|
| TOLERANCES ON DIMENSIONS (UNLESS OTHERWISE SPECIFIED) | |
| INCHES .XX = ± .010 .XXX = ± .005 | mm |
| ANGLES X° = ±1° | |

| | | | |
|--|-----|--------------|---------------|
| NIDEC MOTOR CORPORATION | | | |
| INFORMATION DISCLOSED ON THIS DOCUMENT IS CONSIDERED PROPRIETARY AND SHALL NOT BE REPRODUCED OR DISCLOSED WITHOUT WRITTEN CONSENT OF NIDEC MOTOR CORPORATION | | | |
| TITLE | | CODE | REVISION DATE |
| CUSTOMER DETAIL DRAWING | | V02 | 04-MAR-19 |
| ITEM NO. | REV | SHEET NUMBER | DWG SIZE |
| 825747 | -- | 1 OF 4 | B |

General Purpose Three Phase Open Drip Proof (ODP) NEMA®† Premium Efficient


**NEMA
Premium**

DE, RE

APPLICATIONS:

For pumps, fans, compressors, material handling, and other general purpose applications where contaminants are minimal.

FEATURES:

- Class F Insulation, Class B Rise At Service Factor
- Rolled Steel Frame 56-320, Cast Iron Frame 360-440
- Aluminum End Shields 56-250, Cast Iron End Shields 280-440
- 40°C Ambient, NEMA®† Design B Performance On 60 Hz Sine Wave Power
- 1.15 Service Factor
- Reversible Rotation
- Regreasable Bearings 210 Frame & Up
- Double Shielded Bearings 140-400, Open on 440
- Bearing Caps On 400 & 440 Frames
- F1 Assembly Position except where noted
- Lifting Provisions 180 Frame & Up
- Conversion Kits: Drip Cover Kits (140-320 Frame)

| HP | RPM | Voltage | Frame | Catalog Number | List | Discount Symbol | SF | "C" Dim. (inches) | Ship Wt. (lbs.) | NEMA Nom. Eff. | Full Load Amps | Notes |
|------|-------|-------------|-------|----------------|--------|-----------------|-------|-------------------|-----------------|----------------|----------------|-------|
| 1/4 | 1800 | 208-230/460 | 48 | D14P2B4 | \$265 | DS-3E | 1.35 | 9.6 | 17 | 69.5 | 1.3-1.3/1.7 | |
| | 1800 | 208-230/460 | 56H | D14P2AH | \$275 | DS-3E | 1.35 | 10.9 | 26 | 69.5 | 1.1-1.1/10.5 | |
| | 1200 | 208-230/460 | 56 | D14P3A | \$397 | DS-3E | 1.35 | 11.9 | 32 | 67.2 | 1.4-1.4/0.7 | |
| 1/3 | 1800 | 208-230/460 | 56H | D13P2AH | \$282 | DS-3E | 1.35 | 11.4 | 26 | 73.4 | 1.4-1.4/0.7 | |
| 1/2 | 1800 | 208-230/460 | 56H | D12P2AH | \$322 | DS-3E | 1.25 | 11.4 | 24 | 78.2 | 1.99-1.9/0.98 | |
| | 1800 | 208-230/460 | 56 | D12P2D | \$322 | DS-3E | 1.00 | 10.4 | 20 | 78.2 | 2.0-2.0/1.0 | |
| | 1200 | 208-230/460 | 56H | D12P3AH | \$511 | DS-3E | 1.25 | 12.4 | 38 | 75.3 | 2.4/1.2 | |
| 3/4 | 3600 | 230/460 | 48 | D34P1B | \$346 | DS-3E | 1.25 | 10.1 | 19 | 76.8 | 2.4/1.2 | |
| | 1800 | 208-230/460 | 56 | D34P2AH | \$359 | DS-3E | 1.25 | 10.0 | 25 | 81.1 | 2.8-2.8/1.4 | |
| 1 | 3600 | 208-230/460 | 56 | D1P1A | \$400 | DS-3E | 1.25 | 10.4 | 25 | 77.0 | 2.8-2.8/1.4 | |
| | 1800 | 200 | 143T | D1P2H | \$443 | DS-3E | 1.15 | 12.8 | 30 | 85.5 | 3.6 | |
| | 1800 | 208-230/460 | 56H | D1P2AH | \$405 | DS-3E | 1.15 | 12.4 | 32 | 83.5 | 3.2-3.0/1.5 | |
| | 1800 | 208-230/460 | 56HZ | D1P2DHZ | \$443 | DS-3E | 1.15 | 13.8 | 26 | 83.5 | 3.3-3.3/1.6 | |
| | 1800 | 208-230/460 | 143T | D1P2D | \$443 | DS-3E | 1.15 | 12.8 | 30 | 85.5 | 3.2-3.1/1.6 | 03 |
| | 1800 | 575 | 143T | D1P2G | \$443 | DS-3E | 1.15 | 12.8 | 30 | 85.5 | 1.3 | |
| | 1200 | 200 | 145T | D1P3H | \$595 | DS-3E | 1.15 | 14.1 | 35 | 82.5 | 4.5 | |
| | 1200 | 208-230/460 | 145T | D1P3D | \$595 | DS-3E | 1.15 | 14.1 | 35 | 82.5 | 4.4/2 | 03 |
| | 1200 | 575 | 145T | D1P3G | \$595 | DS-3E | 1.15 | 14.1 | 35 | 82.5 | 1.6 | |
| | 900 | 230/460 | 182T | D1P4E | \$686 | DS-3E | 1.15 | 13.7 | 50 | 75.5 | 4.5/2.2 | 03 |
| | 1 1/2 | 3600 | 200 | 143T | D32P1H | \$472 | DS-3E | 1.15 | 12.8 | 30 | 84.0 | 4.3 |
| 3600 | | 208-230/460 | 143T | D32P1D | \$472 | DS-3E | 1.15 | 12.8 | 30 | 85.5 | 4.2-3.8/1.9 | 03 |
| 3600 | | 575 | 143T | D32P1G | \$472 | DS-3E | 1.15 | 12.8 | 30 | 85.5 | 1.5 | |
| 1800 | | 200 | 145T | D32P2H | \$466 | DS-3E | 1.15 | 12.8 | 35 | 86.5 | 4.9 | |
| 1800 | | 208-230/460 | 56H | D32P2AH | \$466 | DS-3E | 1.15 | 12.9 | 33 | 86.5 | 5.0-4.8/2.4 | |
| 1800 | | 208-230/460 | 145T | D32P2D | \$466 | DS-3E | 1.15 | 12.8 | 35 | 86.5 | 4.4-4.2/2.1 | 03 |
| 1800 | | 230/460 | 145T | D32P2B2 | \$466 | DS-3E | 1.15 | 12.8 | 45 | 86.5 | 4.2/2.1 | 05 |
| 1800 | | 575 | 145T | D32P2G | \$466 | DS-3E | 1.15 | 12.8 | 35 | 86.5 | 1.7 | |
| 1200 | | 200 | 182T | D32P3H | \$600 | DS-3E | 1.15 | 15.0 | 45 | 86.5 | 6.3 | |
| 1200 | | 208-230/460 | 182T | D32P3D | \$600 | DS-3E | 1.15 | 13.7 | 45 | 86.5 | 5.2-5.3/2.6 | 03 |
| 1200 | | 575 | 182T | D32P3G | \$600 | DS-3E | 1.15 | 13.7 | 45 | 86.5 | 2.1 | |
| 2 | 3600 | 200 | 145T | D2P1H | \$515 | DS-3E | 1.15 | 12.8 | 35 | 85.5 | 5.6 | |
| | 3600 | 208-230/460 | 56H | D2P1AH | \$462 | DS-3E | 1.15 | 11.9 | 32 | 85.5 | 6.0-5.4/2.7 | |
| | 3600 | 208-230/460 | 145T | D2P1D | \$515 | DS-3E | 1.15 | 12.8 | 35 | 85.5 | 5.5-5/2.5 | 03 |
| | 3600 | 575 | 145T | D2P1G | \$515 | DS-3E | 1.15 | 12.8 | 35 | 85.5 | 2 | |
| | 1800 | 200 | 145T | D2P2H | \$512 | DS-3E | 1.15 | 12.8 | 35 | 86.5 | 6.4 | |
| | 1800 | 208-230/460 | 56H | D2P2AH | \$415 | DS-3E | 1.15 | 12.9 | 40 | 86.5 | 6.6-6.6/3.3 | |
| | 1800 | 208-230/460 | 56HZ | D2P2DHZ | \$444 | DS-3E | 1.15 | 14.3 | 42 | 86.5 | 6.2-6.0/3.0 | |
| | 1800 | 208-230/460 | 145T | D2P2D | \$512 | DS-3E | 1.15 | 12.8 | 35 | 86.5 | 5.9-5.6/2.8 | 03 |
| | 1800 | 230/460 | 145T | D2P2B2 | \$512 | DS-3E | 1.15 | 12.8 | 35 | 86.5 | 5.6/2.8 | 05 |

Note 03 60/50 Hz rated with no derate on HP; 230/460 volt 60 Hz ratings operate on 190/380 volt 50 Hz, 460V 60 Hz ratings operate on 380V 50 Hz; Full 60 & 50 Hz data on Nameplate

Note 05 F2 Assembly Position

General Purpose Three Phase Open Drip Proof (ODP) NEMA[®] Premium Efficient



**NEMA
Premium**

(continued)

DE, RE

| HP | RPM | Voltage | Frame | Catalog Number | List | Discount Symbol | SF | "C" Dim. (inches) | Ship Wt. (lbs.) | NEMA Nom. Eff. | Full Load Amps | Notes |
|------|---------|-------------|-------|----------------|---------|-----------------|-------|-------------------|-----------------|----------------|----------------|-------|
| 2 | 1800 | 575 | 145T | D2P2G | \$512 | DS-3E | 1.15 | 12.8 | 35 | 85.5 | 2.2 | |
| | 1200 | 200 | 184T | D2P3H | \$672 | DS-3E | 1.15 | 15.0 | 60 | 87.5 | 7.3 | |
| | 1200 | 208-230/460 | 184T | D2P3D | \$672 | DS-3E | 1.15 | 13.7 | 60 | 87.5 | 6.4-6.3/3.1 | 03 |
| | 1200 | 575 | 184T | D2P3G | \$672 | DS-3E | 1.15 | 15.0 | 60 | 87.5 | 2.5 | |
| | 900 | 230/460 | 213T | D2P4E | \$1,119 | DS-3E | 1.15 | 16.0 | 90 | 86.5 | 7.2/3.6 | 03 |
| 3 | 3600 | 200 | 145T | D3P1H | \$529 | DS-3E | 1.15 | 12.8 | 35 | 85.5 | 8.4 | |
| | 3600 | 208-230/460 | 145T | D3P1D | \$529 | DS-3E | 1.15 | 12.8 | 35 | 85.5 | 8.3-7.4/3.7 | 03 |
| | 3600 | 575 | 145T | D3P1G | \$529 | DS-3E | 1.15 | 12.8 | 35 | 85.5 | 2.9 | |
| | 1800 | 200 | 182T | D3P2H | \$544 | DS-3E | 1.15 | 13.7 | 50 | 89.5 | 8.8 | |
| | 1800 | 208-230/460 | 56HZ | D3P2AHZ | \$576 | DS-3E | 1.15 | 13.5 | 21 | 86.9 | 9.7-9.4/4.6 | |
| | 1800 | 208-230/460 | 182T | D3P2D | \$544 | DS-3E | 1.15 | 13.7 | 50 | 90.2 | 8.3-7.6/3.8 | 03 |
| | 1800 | 208-230/460 | 182T | D3PA2D | \$794 | DS-3E | 1.15 | 15.0 | 50 | 90.2 | 8.3-7.6/3.8 | 24 |
| | 1800 | 575 | 182T | D3P2G | \$544 | DS-3E | 1.15 | 13.7 | 50 | 89.5 | 3.1 | |
| | 1200 | 200 | 213T | D3P3H | \$855 | DS-3E | 1.15 | 16.0 | 90 | 88.5 | 10.5 | |
| | 1200 | 208-230/460 | 213T | D3P3D | \$855 | DS-3E | 1.15 | 16.0 | 94 | 88.5 | 9.4-8.9/4.4 | |
| | 1200 | 575 | 213T | D3P3G | \$855 | DS-3E | 1.15 | 16.0 | 90 | 88.5 | 3.6 | |
| 900 | 230/460 | 215T | D3P4E | \$1,435 | DS-3E | 1.15 | 17.5 | 105 | 87.5 | 10.8/5.4 | 03 | |
| 5 | 3600 | 200 | 182T | D5P1H | \$564 | DS-3E | 1.15 | 13.7 | 50 | 88.5 | 14.1 | |
| | 3600 | 208-230/460 | 182T | D5P1D | \$564 | DS-3E | 1.15 | 13.7 | 50 | 86.5 | 13.8-12.5/6.2 | 03 |
| | 3600 | 575 | 182T | D5P1G | \$564 | DS-3E | 1.15 | 13.7 | 50 | 87.5 | 5 | |
| | 1800 | 200 | 184T | D5P2H | \$586 | DS-3E | 1.15 | 13.7 | 70 | 89.5 | 14.2 | |
| | 1800 | 208-230/460 | 184T | D5P2D | \$586 | DS-3E | 1.15 | 13.7 | 70 | 89.5 | 13.7-12.4/6.2 | 03 |
| | 1800 | 208-230/460 | 184T | D5PA2A | \$836 | DS-3E | 1.15 | 15.0 | 60 | 89.5 | 13.8-12.6/6.3 | 24,LA |
| | 1800 | 575 | 184T | D5P2G | \$586 | DS-3E | 1.15 | 13.7 | 70 | 89.5 | 4.9 | |
| | 1200 | 200 | 215T | D5P3H | \$1,122 | DS-3E | 1.15 | 17.5 | 105 | 89.5 | 16.1 | |
| | 1200 | 208-230/460 | 215T | D5P3D | \$1,122 | DS-3E | 1.15 | 17.5 | 105 | 89.5 | 15.2-14.5/7.3 | LA |
| | 1200 | 575 | 215T | D5P3G | \$1,122 | DS-3E | 1.15 | 17.5 | 105 | 89.5 | 5.7 | |
| | 900 | 208-230/460 | 254T | D5P4D | \$2,271 | DS-3E | 1.15 | 22.6 | 150 | 88.5 | 16.2-15.7/7.9 | 02,03 |
| | 900 | 575 | 254T | D5P4G | \$2,271 | DS-3E | 1.15 | 22.6 | 150 | 88.5 | 6.2 | 02 |
| | 7 1/2 | 3600 | 200 | 184T | D7P1H | \$880 | DS-3E | 1.15 | 13.7 | 60 | 88.5 | 20.8 |
| 3600 | | 208-230/460 | 184T | D7P1D | \$880 | DS-3E | 1.15 | 13.7 | 60 | 88.5 | 20.3-18.1/9.1 | 03 |
| 3600 | | 575 | 184T | D7P1G | \$880 | DS-3E | 1.15 | 13.7 | 60 | 88.5 | 7.3 | |
| 1800 | | 200 | 213T | D7P2H | \$857 | DS-3E | 1.15 | 16.0 | 94 | 91.0 | 21.4 | |
| 1800 | | 208-230/460 | 213T | D7P2D | \$857 | DS-3E | 1.15 | 16.0 | 105 | 91.0 | 20.2-18.5/9.3 | |
| 1800 | | 208-230/460 | 213T | D7PA2A | \$1,207 | DS-3E | 1.15 | 16.0 | 90 | 91.0 | 20.5-18.5/9.2 | 24 |
| 1800 | | 575 | 213T | D7P2G | \$857 | DS-3E | 1.15 | 16.0 | 94 | 91.0 | 7.3 | |
| 1200 | | 200 | 254T | D7P3H | \$1,423 | DS-3E | 1.15 | 22.6 | 150 | 91.0 | 21.9 | |
| 1200 | | 208-230/460 | 254T | D7P3D | \$1,423 | DS-3E | 1.15 | 19.1 | 150 | 91.0 | 20.5-18.9/9.5 | 02,03 |
| 1200 | | 575 | 254T | D7P3G | \$1,423 | DS-3E | 1.15 | 19.1 | 150 | 91.0 | 7.6 | 02 |
| 900 | | 208-230/460 | 256T | D7P4D | \$2,889 | DS-3E | 1.15 | 22.6 | 160 | 89.5 | 23.7-22.7/11.3 | 02,03 |
| 900 | | 575 | 256T | D7P4G | \$2,889 | DS-3E | 1.15 | 23.2 | 160 | 89.5 | 9.1 | 02 |
| 10 | 3600 | 200 | 213T | D10P1H | \$1,029 | DS-3E | 1.15 | 16.0 | 90 | 90.2 | 28 | |
| | 3600 | 208-230/460 | 213T | D10P1D | \$1,029 | DS-3E | 1.15 | 16.0 | 90 | 90.2 | 27.1-24.3/12.2 | 03 |
| | 3600 | 575 | 213T | D10P1G | \$1,029 | DS-3E | 1.15 | 16.0 | 90 | 90.2 | 9.7 | |
| | 1800 | 200 | 215T | D10P2H | \$1,043 | DS-3E | 1.15 | 17.5 | 100 | 91.7 | 28.1 | |
| | 1800 | 208-230/460 | 215T | D10P2D | \$1,043 | DS-3E | 1.15 | 17.5 | 133 | 92.4 | 26.3-23.8/11.9 | |
| | 1800 | 575 | 215T | D10P2G | \$1,043 | DS-3E | 1.15 | 17.5 | 104 | 91.7 | 9.8 | |
| | 1200 | 200 | 256T | D10P3H | \$1,851 | DS-3E | 1.15 | 23.2 | 160 | 91.7 | 29.3 | |
| | 1200 | 208-230/460 | 256T | D10P3D | \$1,851 | DS-3E | 1.15 | 21.0 | 160 | 91.7 | 27.2-25/12.5 | 02,03 |
| | 1200 | 575 | 256T | D10P3G | \$1,851 | DS-3E | 1.15 | 20.4 | 160 | 91.7 | 10.2 | 02 |
| | 900 | 208-230/460 | 284T | D10P4D | \$3,266 | DS-3E | 1.15 | 24.9 | 225 | 90.2 | 31-29.2/14.6 | 02,03 |

Note 02 Suitable for Wye-Delta start on voltages shown
 Note 03 60/50 Hz rated with no derate on HP; 230/460 volt 60 Hz ratings operate on 190/380 volt 50 Hz, 460V 60 Hz ratings operate on 380V 50 Hz; Full 60 & 50 Hz data on Nameplate

Note 24 Automatic Reset Thermal Protector Overload
 Note LA Limited Availability

GENERAL PURPOSE UNIMOUNT™
 GENERAL PURPOSE C-FACE
 GENERAL PURPOSE HOSTILE DUTY
 GENERAL PURPOSE CORRO-DUTY™
 GENERAL PURPOSE 84 PLUS™
 GENERAL PURPOSE OPEN DRIP PROOF
 HAZARDOUS LOCATION
 GENERAL PURPOSE AUTOMOTIVE DUTY
 COOLING TOWER DUTY
 HAZARDOUS LOCATION
 C-FACE MOTORS
 VARIABLE SPEED MOTORS AND DRIVES

General Purpose Three Phase Open Drip Proof (ODP) NEMA®† Premium Efficient


NEMA
Premium

DE, RE

(continued)

| HP | RPM | Voltage | Frame | Catalog Number | List | Discount Symbol | SF | "C" Dim. (inches) | Ship Wt. (lbs.) | NEMA Nom. Eff. | Full Load Amps | Notes |
|------|------|-------------|-------|----------------|---------|-----------------|-------|-------------------|-----------------|----------------|----------------|----------|
| 15 | 3600 | 200 | 215T | D15P1H | \$1,414 | DS-3E | 1.15 | 17.5 | 100 | 90.2 | 41 | |
| | 3600 | 208-230/460 | 215T | D15P1D | \$1,414 | DS-3E | 1.15 | 17.5 | 100 | 90.2 | 40-36/18 | 03 |
| | 3600 | 575 | 215T | D15P1G | \$1,414 | DS-3E | 1.15 | 17.5 | 104 | 90.2 | 14.6 | |
| | 1800 | 200 | 254T | D15P2H | \$1,426 | DS-3E | 1.15 | 19.1 | 150 | 93.0 | 42 | 02 |
| | 1800 | 208-230/460 | 254T | D15P2D | \$1,426 | DS-3E | 1.15 | 19.1 | 150 | 93.0 | 40-37/18.3 | 02,03 |
| | 1800 | 575 | 254T | D15P2G | \$1,426 | DS-3E | 1.15 | 19.1 | 150 | 93.0 | 14.8 | 02 |
| | 1200 | 200 | 284T | D15P3H | \$2,363 | DS-3E | 1.15 | 24.9 | 300 | 91.7 | 42 | |
| | 1200 | 208-230/460 | 284T | D15P3D | \$2,363 | DS-3E | 1.15 | 24.9 | 300 | 91.7 | 41-37/18.5 | |
| | 1200 | 575 | 284T | D15P3G | \$2,363 | DS-3E | 1.15 | 24.9 | 300 | 91.7 | 14.7 | 02 |
| | 900 | 208-230/460 | 286T | D15P4D | \$4,292 | DS-3E | 1.15 | 24.9 | 250 | 90.2 | 46/43 | 02,03 |
| 20 | 3600 | 200 | 254T | D20P1H | \$1,711 | DS-3E | 1.15 | 22.6 | 150 | 91.7 | 53 | 02 |
| | 3600 | 208-230/460 | 254T | D20P1D | \$1,711 | DS-3E | 1.15 | 22.6 | 150 | 91.7 | 52-46/23.1 | 02,03 |
| | 3600 | 575 | 254T | D20P1G | \$1,711 | DS-3E | 1.15 | 22.6 | 150 | 91.0 | 18.7 | 02 |
| | 1800 | 200 | 256T | D20P2H | \$1,829 | DS-3E | 1.15 | 23.2 | 160 | 93.0 | 54 | 02 |
| | 1800 | 208-230/460 | 256T | D20P2D | \$1,829 | DS-3E | 1.15 | 23.2 | 160 | 93.0 | 52-47/23.6 | 02,03 |
| | 1800 | 575 | 256T | D20P2G | \$1,829 | DS-3E | 1.15 | 23.2 | 160 | 93.0 | 18.8 | 02 |
| | 1200 | 200 | 286T | D20P3H | \$2,880 | DS-3E | 1.15 | 24.9 | 325 | 92.4 | 56 | |
| | 1200 | 208-230/460 | 286T | D20P3D | \$2,880 | DS-3E | 1.15 | 24.9 | 325 | 92.4 | 53-48/24 | 02,03 |
| | 1200 | 575 | 286T | D20P3G | \$2,880 | DS-3E | 1.15 | 24.9 | 325 | 92.4 | 19.3 | 02 |
| | 900 | 230/460 | 324T | D20P4E | \$4,316 | DS-3E | 1.15 | 27.3 | 385 | 91.0 | 54/27 | 02,03 |
| 25 | 3600 | 200 | 256T | D25P1H | \$2,237 | DS-3E | 1.15 | 23.2 | 160 | 91.7 | 67 | 02 |
| | 3600 | 208-230/460 | 256T | D25P1D | \$2,237 | DS-3E | 1.15 | 23.2 | 160 | 91.7 | 65-57/28.7 | 02,03 |
| | 3600 | 575 | 256T | D25P1G | \$2,237 | DS-3E | 1.15 | 23.2 | 160 | 91.7 | 22.9 | 02 |
| | 1800 | 200 | 284T | D25P2H | \$2,214 | DS-3E | 1.15 | 24.9 | 300 | 93.6 | 67 | 02,03 |
| | 1800 | 200 | 284TS | D25P2HS | \$2,214 | DS-3E | 1.15 | 23.5 | 300 | 93.6 | 67 | |
| | 1800 | 208-230/460 | 284T | D25P2D | \$2,214 | DS-3E | 1.15 | 24.9 | 300 | 93.6 | 64-58/29 | 02,03 |
| | 1800 | 208-230/460 | 284TS | D25P2DS | \$2,214 | DS-3E | 1.15 | 23.5 | 300 | 93.6 | 64-58/29 | |
| | 1800 | 460 | 284TS | D25P2CS | \$2,214 | DS-3E | 1.15 | 23.5 | 300 | 93.6 | 29 | |
| | 1800 | 575 | 284T | D25P2G | \$2,214 | DS-3E | 1.15 | 24.9 | 300 | 93.6 | 23.1 | |
| | 1800 | 575 | 284TS | D25P2GS | \$2,214 | DS-3E | 1.15 | 23.5 | 300 | 93.6 | 23.1 | 02 |
| | 1200 | 200 | 324T | D25P3H | \$3,163 | DS-3E | 1.15 | 27.3 | 385 | 93.0 | 67 | 02 |
| | 1200 | 208-230/460 | 324T | D25P3D | \$3,163 | DS-3E | 1.15 | 27.3 | 385 | 93.0 | 65-58/29.1 | 02,03 |
| | 1200 | 575 | 324T | D25P3G | \$3,163 | DS-3E | 1.15 | 27.3 | 385 | 93.0 | 23.5 | 02 |
| | 900 | 230/460 | 326T | D25P4E | \$5,113 | DS-3E | 1.15 | 27.3 | 460 | 91.0 | 67/33 | 02,03 |
| | 30 | 3600 | 200 | 284TS | D30P1HS | \$2,637 | DS-3E | 1.15 | 23.5 | 225 | 92.4 | 78 |
| 3600 | | 208-230/460 | 284TS | D30P1DS | \$2,637 | DS-3E | 1.15 | 23.5 | 300 | 92.4 | 79-68/34 | |
| 3600 | | 575 | 284TS | D30P1GS | \$2,637 | DS-3E | 1.15 | 23.5 | 312 | 93.0 | 27.4 | |
| 1800 | | 200 | 286T | D30P2H | \$2,629 | DS-3E | 1.15 | 24.9 | 350 | 94.1 | 79 | |
| 1800 | | 200 | 286TS | D30P2HS | \$2,629 | DS-3E | 1.15 | 23.5 | 350 | 94.1 | 79 | |
| 1800 | | 208-230/460 | 286T | D30P2D | \$2,629 | DS-3E | 1.15 | 24.9 | 250 | 94.1 | 77-69/34 | |
| 1800 | | 208-230/460 | 286TS | D30P2DS | \$2,629 | DS-3E | 1.15 | 23.5 | 250 | 94.1 | 77-69/34 | |
| 1800 | | 575 | 286T | D30P2G | \$2,629 | DS-3E | 1.15 | 24.9 | 362 | 94.1 | 27.7 | |
| 1800 | | 575 | 286TS | D30P2GS | \$2,629 | DS-3E | 1.15 | 23.5 | 350 | 94.1 | 27.5 | 02 |
| 1200 | | 200 | 326T | D30P3H | \$3,629 | DS-3E | 1.15 | 27.3 | 415 | 93.6 | 81 | 02,14 |
| 1200 | | 208-230/460 | 326T | D30P3D | \$3,629 | DS-3E | 1.15 | 27.3 | 415 | 93.6 | 78-70/35 | 02,03,14 |
| 1200 | | 575 | 326T | D30P3G | \$3,629 | DS-3E | 1.15 | 27.3 | 415 | 93.6 | 28 | 02,14 |

Note 02 Suitable for Wye-Delta start on voltages shown

Note 03 60/50 Hz rated with no derate on HP; 230/460 volt 60 Hz ratings operate on 190/380 volt 50 Hz, 460V 60 Hz ratings operate on 380V 50 Hz; Full 60 & 50 Hz data on Nameplate

Note 14 NEMA Design A

General Purpose Three Phase Open Drip Proof (ODP) NEMA[®] Premium Efficient



**NEMA
Premium**

(continued)

DE, RE

| HP | RPM | Voltage | Frame | Catalog Number | List | Discount Symbol | SF | "C" Dim. (inches) | Ship Wt. (lbs.) | NEMA Nom. Eff. | Full Load Amps | Notes |
|------|---------|-------------|---------|----------------|----------|-----------------|-------|-------------------|-----------------|----------------|----------------|--------|
| 40 | 3600 | 200 | 286TS | D40P1HS | \$2,883 | DS-3E | 1.15 | 23.5 | 250 | 93.0 | 104 | 02 |
| | 3600 | 208-230/460 | 286TS | D40P1DS | \$2,883 | DS-3E | 1.15 | 23.5 | 250 | 93.0 | 104-90/45 | 02,03 |
| | 3600 | 575 | 286TS | D40P1GS | \$2,883 | DS-3E | 1.15 | 23.5 | 362 | 93.0 | 36 | |
| | 1800 | 200 | 324T | D40P2H | \$2,889 | DS-3E | 1.15 | 25.8 | 454 | 94.1 | 105 | 02 |
| | 1800 | 200 | 324TS | D40P2HS | \$2,889 | DS-3E | 1.15 | 25.8 | 454 | 94.1 | 105 | 02 |
| | 1800 | 208-230/460 | 324T | D40P2D | \$2,889 | DS-3E | 1.15 | 27.3 | 385 | 94.1 | 102-91/46 | 02,03 |
| | 1800 | 208-230/460 | 324TS | D40P2DS | \$2,889 | DS-3E | 1.15 | 25.8 | 454 | 94.1 | 102-91/46 | 02,03 |
| | 1800 | 575 | 324T | D40P2G | \$2,889 | DS-3E | 1.15 | 27.3 | 454 | 94.5 | 37 | |
| | 1800 | 575 | 324TS | D40P2GS | \$2,889 | DS-3E | 1.15 | 25.8 | 454 | 94.1 | 36 | 02 |
| | 1200 | 230/460 | 364T | D40P3E | \$5,786 | DS-3E | 1.15 | 28.7 | 580 | 94.5 | 92/46 | 02,03 |
| | 1200 | 575 | 364T | D40P3G | \$5,786 | DS-3E | 1.15 | 28.7 | 580 | 94.5 | 37 | 02 |
| | 900 | 230/460 | 365T | D40P4E | \$7,020 | DS-3E | 1.15 | 29.7 | 600 | 92.4 | 106/53 | 02,03 |
| 50 | 3600 | 200 | 324TS | D50P1HS | \$3,243 | DS-3E | 1.15 | 25.8 | 385 | 93.0 | 134 | 02 |
| | 3600 | 208-230/460 | 324TS | D50P1DS | \$3,243 | DS-3E | 1.15 | 25.8 | 450 | 93.0 | 130-117/59 | 02,03 |
| | 3600 | 575 | 324TS | D50P1GS | \$3,243 | DS-3E | 1.15 | 25.8 | 385 | 93.0 | 47 | 02 |
| | 1800 | 200 | 326T | D50P2H | \$3,386 | DS-3E | 1.15 | 27.3 | 415 | 94.5 | 130 | 02 |
| | 1800 | 200 | 326TS | D50P2HS | \$3,386 | DS-3E | 1.15 | 25.8 | 415 | 94.5 | 130 | 02 |
| | 1800 | 208-230/460 | 326T | D50P2D | \$3,386 | DS-3E | 1.15 | 27.3 | 460 | 94.5 | 126-113/56 | 02,03 |
| | 1800 | 208-230/460 | 326TS | D50P2DS | \$3,386 | DS-3E | 1.15 | 25.8 | 415 | 94.5 | 56 | 02,03 |
| | 1800 | 460 & 380 | 326TS | D50P2FS | \$3,386 | DS-3E | 1.15 | 25.8 | 415 | 94.5 | 56 | 02,03 |
| | 1800 | 575 | 326T | D50P2G | \$3,386 | DS-3E | 1.15 | 27.3 | 460 | 94.5 | 46 | |
| | 1800 | 575 | 326TS | D50P2GS | \$3,386 | DS-3E | 1.15 | 25.8 | 415 | 94.5 | 45 | 02 |
| | 1200 | 230/460 | 365T | D50P3E | \$6,506 | DS-3E | 1.15 | 29.7 | 580 | 94.5 | 115/57 | |
| | 1200 | 575 | 365T | D50P3G | \$6,506 | DS-3E | 1.15 | 29.7 | 580 | 94.5 | 46 | 02 |
| 900 | 230/460 | 404T | D50P4E | \$8,364 | DS-3E | 1.15 | 32.5 | 750 | 92.4 | 132/66 | 02,03 | |
| 60 | 3600 | 200 | 326TS | D60P1HS | \$4,469 | DS-3E | 1.15 | 25.8 | 460 | 93.6 | 155 | 02 |
| | 3600 | 208-230/460 | 326TS | D60P1DS | \$4,469 | DS-3E | 1.15 | 25.8 | 460 | 93.6 | 152-134/67 | 02,03 |
| | 3600 | 575 | 326TS | D60P1GS | \$4,469 | DS-3E | 1.15 | 25.8 | 415 | 93.6 | 54 | 02,14 |
| | 1800 | 230/460 | 364T | D60P2E | \$4,657 | DS-3E | 1.15 | 28.7 | 580 | 95.0 | 138/69 | 02,03 |
| | 1800 | 230/460 | 364TS | D60P2ES | \$4,657 | DS-3E | 1.15 | 26.6 | 580 | 95.0 | 138/69 | |
| | 1800 | 460 & 380 | 364TS | D60P2FS | \$4,657 | DS-3E | 1.15 | 26.6 | 580 | 95.0 | 69 | |
| | 1800 | 575 | 364T | D60P2G | \$4,657 | DS-3E | 1.15 | 28.7 | 580 | 95.0 | 55 | 02 |
| | 1800 | 575 | 364TS | D60P2GS | \$4,657 | DS-3E | 1.15 | 26.6 | 580 | 95.0 | 55 | 02 |
| | 1200 | 230/460 | 404T | D60P3E | \$7,706 | DS-3E | 1.15 | 32.6 | 750 | 95.0 | 137/69 | 02,03 |
| | 1200 | 575 | 404T | D60P3G | \$7,706 | DS-3E | 1.15 | 32.6 | 750 | 94.5 | 55 | |
| | 900 | 230/460 | 405T | D60P4E | \$9,698 | DS-3E | 1.15 | 34.0 | 800 | 93.0 | 157/79 | 02,03 |
| | 75 | 3600 | 230/460 | 364TS | D75P1ES | \$5,886 | DS-3E | 1.15 | 26.6 | 580 | 94.1 | 171/86 |
| 3600 | | 575 | 364TS | D75P1GS | \$5,886 | DS-3E | 1.15 | 26.6 | 580 | 94.1 | 69 | 02 |
| 1800 | | 230/460 | 365T | D75P2E | \$5,514 | DS-3E | 1.15 | 29.7 | 735 | 95.0 | 172/86 | 02,03 |
| 1800 | | 230/460 | 365TS | D75P2ES | \$5,514 | DS-3E | 1.15 | 27.6 | 600 | 95.0 | 172/86 | |
| 1800 | | 460 & 380 | 365TS | D75P2FS | \$5,514 | DS-3E | 1.15 | 27.6 | 600 | 95.0 | 86 | |
| 1800 | | 575 | 365T | D75P2G | \$5,514 | DS-3E | 1.15 | 29.7 | 600 | 95.0 | 69 | 02 |
| 1800 | | 575 | 365TS | D75P2GS | \$5,514 | DS-3E | 1.15 | 27.6 | 600 | 95.0 | 69 | 02 |
| 1200 | | 230/460 | 405T | D75P3E | \$8,674 | DS-3E | 1.15 | 34.1 | 800 | 95.0 | 172/86 | 02,03 |
| 1200 | | 575 | 405T | D75P3G | \$8,674 | DS-3E | 1.15 | 34.1 | 800 | 94.5 | 69 | 02 |
| 900 | | 230/460 | 444T | D75P4E | \$11,665 | DS-3E | 1.15 | 39.8 | 1100 | 94.1 | 194/97 | 02,03 |

Note 02 Suitable for Wye-Delta start on voltages shown
 Note 03 60/50 Hz rated with no derate on HP; 230/460 volt 60 Hz ratings operate on 190/380 volt 50 Hz, 460V 60 Hz ratings operate on 380V 50 Hz;
 Full 60 & 50 Hz data on Nameplate
 Note 14 NEMA Design A

GENERAL PURPOSE UNIMOUNT™
 GENERAL PURPOSE C-FACE
 GENERAL PURPOSE HOSTILE DUTY
 GENERAL PURPOSE CORRO-DUTY™
 GENERAL PURPOSE 84 PLUS™
 GENERAL PURPOSE OPEN DRIPPROOF
 GENERAL PURPOSE HAZARDOUS LOCATION
 GENERAL PURPOSE AUTOMOTIVE DUTY
 COOLING TOWER DUTY
 HAZARDOUS LOCATION
 C-FACE MOTORS
 VARIABLE SPEED MOTORS AND DRIVES

General Purpose Three Phase Open Drip Proof (ODP) NEMA[®] Premium Efficient


NEMA
Premium

DE, RE

(continued)

| HP | RPM | Voltage | Frame | Catalog Number | List | Discount Symbol | SF | "C" Dim. (inches) | Ship Wt. (lbs.) | NEMA Nom. Eff. | Full Load Amps | Notes |
|-----|------|-----------|-------|----------------|----------|-----------------|------|-------------------|-----------------|----------------|----------------|-------|
| 100 | 3600 | 230/460 | 365TS | D100P1ES | \$6,500 | DS-3E | 1.15 | 27.6 | 600 | 94.1 | 224/112 | LA |
| | 3600 | 575 | 365TS | D100P1GS | \$6,500 | DS-3E | 1.15 | 27.6 | 600 | 94.1 | 90 | 02 |
| | 1800 | 230/460 | 404T | D100P2E | \$6,571 | DS-3E | 1.15 | 32.6 | 750 | 95.4 | 226/113 | 02,03 |
| | 1800 | 230/460 | 404TS | D100P2ES | \$6,571 | DS-3E | 1.15 | 29.6 | 750 | 95.4 | 226/113 | 02,03 |
| | 1800 | 460 & 380 | 404TS | D100P2FS | \$6,571 | DS-3E | 1.15 | 29.6 | 750 | 95.4 | 113 | 02,03 |
| | 1800 | 575 | 404T | D100P2G | \$6,571 | DS-3E | 1.15 | 32.6 | 750 | 95.4 | 90 | 02 |
| | 1800 | 575 | 404TS | D100P2GS | \$6,571 | DS-3E | 1.15 | 29.6 | 750 | 95.4 | 90 | 02 |
| | 1200 | 230/460 | 444T | D100P3E | \$10,274 | DS-3E | 1.15 | 39.8 | 1100 | 95.0 | 234/117 | 02,03 |
| | 1200 | 575 | 444T | D100P3G | \$10,274 | DS-3E | 1.15 | 39.8 | 1100 | 95.0 | 94 | 02 |
| | 900 | 230/460 | 445T | D100P4E | \$16,450 | DS-3E | 1.15 | 39.8 | 1200 | 94.1 | 255/128 | 02,03 |
| 125 | 3600 | 460 & 380 | 404TS | D125P1FS | \$8,706 | DS-3E | 1.15 | 29.6 | 750 | 95.0 | 136 | 02,03 |
| | 3600 | 575 | 404TS | D125P1GS | \$8,706 | DS-3E | 1.15 | 29.6 | 750 | 94.5 | 109 | 02 |
| | 1800 | 460 & 380 | 405T | D125P2F | \$8,743 | DS-3E | 1.15 | 34.1 | 800 | 95.4 | 140 | 02,03 |
| | 1800 | 460 & 380 | 405TS | D125P2FS | \$8,743 | DS-3E | 1.15 | 31.1 | 800 | 95.4 | 140 | 02,03 |
| | 1800 | 575 | 405T | D125P2G | \$8,743 | DS-3E | 1.15 | 34.1 | 800 | 95.4 | 112 | |
| | 1800 | 575 | 405TS | D125P2GS | \$8,743 | DS-3E | 1.15 | 31.1 | 800 | 95.4 | 112 | 02 |
| | 1200 | 460 & 380 | 445T | D125P3F | \$11,097 | DS-3E | 1.15 | 39.8 | 1200 | 95.0 | 146 | 02,03 |
| | 1200 | 575 | 445T | D125P3G | \$11,097 | DS-3E | 1.15 | 39.8 | 1200 | 95.0 | 118 | 02 |
| 150 | 3600 | 460 & 380 | 405TS | D150P1FS | \$10,743 | DS-3E | 1.15 | 31.1 | 800 | 94.5 | 164 | 02,03 |
| | 3600 | 575 | 405TS | D150P1GS | \$10,743 | DS-3E | 1.15 | 31.1 | 813 | 94.1 | 131 | |
| | 1800 | 460 & 380 | 444T | D150P2F | \$11,431 | DS-3E | 1.15 | 39.8 | 1100 | 95.8 | 170 | 02,03 |
| | 1800 | 460 & 380 | 444TS | D150P2FS | \$11,431 | DS-3E | 1.15 | 36.1 | 1100 | 95.8 | 170 | 02,03 |
| | 1800 | 575 | 444T | D150P2G | \$11,431 | DS-3E | 1.15 | 39.8 | 1100 | 95.8 | 135 | 02 |
| | 1200 | 460 & 380 | 445T | D150P3F | \$14,949 | DS-3E | 1.15 | 39.8 | 1200 | 95.4 | 174 | 02,03 |
| | 1200 | 575 | 445T | D150P3G | \$14,949 | DS-3E | 1.15 | 39.8 | 1200 | 95.4 | 141 | |
| 200 | 3600 | 460 & 380 | 444TS | D200P1FS | \$13,917 | DS-3E | 1.15 | 36.1 | 1100 | 95.0 | 224 | 02,03 |
| | 3600 | 575 | 444TS | D200P1GS | \$13,917 | DS-3E | 1.15 | 36.1 | 1100 | 95.0 | 179 | 02 |
| | 1800 | 460 & 380 | 445T | D200P2F | \$14,286 | DS-3E | 1.15 | 39.8 | 1200 | 95.8 | 225 | 02,03 |
| | 1800 | 460 & 380 | 445TS | D200P2FS | \$14,286 | DS-3E | 1.15 | 36.1 | 1200 | 95.8 | 225 | 02,03 |
| | 1800 | 575 | 445T | D200P2G | \$14,286 | DS-3E | 1.15 | 39.8 | 1200 | 95.8 | 179 | 02 |
| | 1200 | 460 & 380 | 447T | D200P3F | \$19,649 | DS-3E | 1.15 | 43.3 | 1700 | 95.4 | 250 | 02,03 |
| | 1200 | 575 | 447T | D200P3G | \$19,649 | DS-3E | 1.15 | 43.3 | 1700 | 95.4 | 205 | 02 |
| 250 | 3600 | 460 & 380 | 445TS | D250P1FS | \$18,343 | DS-3E | 1.15 | 36.1 | 1200 | 95.0 | 276 | 02,03 |
| | 3600 | 575 | 445TS | D250P1GS | \$18,343 | DS-3E | 1.15 | 36.1 | 1200 | 95.0 | 222 | 02 |
| | 1800 | 460 & 380 | 445T | D250P2FF | \$16,151 | DS-3E | 1.15 | 39.8 | 1200 | 95.8 | 280 | 02,03 |
| | 1800 | 460 & 380 | 445TS | D250P2FFS | \$16,151 | DS-3E | 1.15 | 36.1 | 1200 | 95.8 | 280 | 02,03 |
| | 1800 | 575 | 445T | D250P2GF | \$16,151 | DS-3E | 1.15 | 39.8 | 1200 | 95.8 | 224 | 02 |
| | 1200 | 575 | 447T | D250P3G | \$22,343 | DS-3E | 1.15 | 43.3 | 1700 | 95.4 | 228 | 02 |

Note 02 Suitable for Wye-Delta start on voltages shown

Note 03 60/50 Hz rated with no derate on HP; 230/460 volt 60 Hz ratings operate on 190/380 volt 50 Hz, 460V 60 Hz ratings operate on 380V 50 Hz; Full 60 & 50 Hz data on Nameplate

Note LA Limited Availability

General Purpose Three Phase Open Drip Proof (ODP) NEMA[®] Premium Efficient



NEMA
Premium

(continued)

DE, RE

| HP | RPM | Voltage | Frame | Catalog Number | List | Discount Symbol | SF | "C" Dim. (inches) | Ship Wt. (lbs.) | NEMA Nom. Eff. | Full Load Amps | Notes |
|-----|------|-----------|-------|----------------|----------|-----------------|------|-------------------|-----------------|----------------|----------------|--------|
| 300 | 3600 | 460 & 380 | 445TS | D300P1FFS | \$25,362 | DS-3E | 1.15 | 36.1 | 1200 | 95.4 | 325 | 02,03 |
| | 1800 | 460 & 380 | 447T | D300P2F | \$21,169 | DS-3E | 1.15 | 43.3 | 1700 | 95.8 | 328 | |
| | 1800 | 460 & 380 | 447TS | D300P2FS | \$21,169 | DS-3E | 1.15 | 39.5 | 1700 | 95.8 | 328 | |
| | 1800 | 575 | 447TS | D300P2GS | \$21,169 | DS-3E | 1.15 | 39.5 | 1700 | 95.8 | 262 | 02, 03 |
| 350 | 3600 | 460 & 380 | 447TS | D350P1FS | \$29,028 | DS-3E | 1.15 | 39.5 | 1723 | 95.8 | 379 | |
| | 1800 | 460 & 380 | 447T | D350P2F | \$28,679 | DS-3E | 1.15 | 43.3 | 1700 | 95.8 | 383 | |
| | 1800 | 460 & 380 | 447TS | D350P2FS | \$28,679 | DS-3E | 1.15 | 39.5 | 1723 | 95.8 | 383 | |
| 400 | 3600 | 460 & 380 | 449TS | D400P1FS | \$34,056 | DS-3E | 1.15 | 44.5 | 2000 | 95.8 | 432 | |
| | 1800 | 460 & 380 | 449T | D400P2F | \$33,647 | DS-3E | 1.15 | 48.3 | 2000 | 95.8 | 442 | |

Note 02 Suitable for Wye-Delta start on voltages shown
 Note 03 60/50 Hz rated with no derate on HP; 230/460 volt 60 Hz ratings operate on 190/380 volt 50 Hz, 460V 60 Hz ratings operate on 380V 50 Hz; Full 60 & 50 Hz data on Nameplate

GENERAL PURPOSE UNIMOUNT[™]
 GENERAL PURPOSE C-FACE
 GENERAL PURPOSE HOSTILE DUTY
 GENERAL PURPOSE CORRO-DUTY[™]
 GENERAL PURPOSE 84 PLUS[™]
 GENERAL PURPOSE OPEN DRIPPROOF
 GENERAL PURPOSE HAZARDOUS LOCATION
 GENERAL PURPOSE AUTOMOTIVE DUTY
 COOLING TOWER DUTY
 HAZARDOUS LOCATION
 C-FACE MOTORS
 VARIABLE SPEED MOTORS AND DRIVES